

Agility® & SmartKits®

New generation of ELISA automation

The true solution for walkaway performance



FOLLOW US

BIOVENDOR.GROUP



Agility®

The instrument redefining ELISA processing with major impact on automation, ease of use, reagents loading, hands on time, productivity and intelligence. Now compatible also with TestLine SmartKits® for the most comprehensive ELISA utilization.

Agility® significantly reduces the total assay time as well as loading of reagents. The system allows up to 16 SmartKits® to run simultaneously as well as to keep 12 plates on board at one time. All consumables for each assay are already prepackaged in the TestLine SmartKit® for the maximum user comfort and safety.

Automation

- Up to 16 SmartKits® carriers stored on-board for simultaneous runs
- Flexible throughput allows up to 12 plates on-board at once
- Up to 200 sample tubes on-board with additional continuous load capability
- Utilizes three precision robotic arms to obtain maximum process efficiency
- Comprehensive monitoring system measuring consumables levels



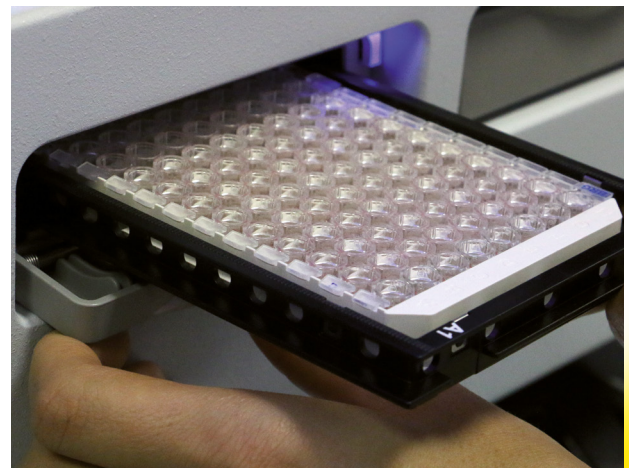
Minimizing of Operating Time



Agility®
12:55 min



"Classic" ELISA
analyzer
36:45 min



Ease-of-Use & Hands on Time

- Intuitive, easy-to-use interface
- Eliminates most of ELISA's labor-intensive, front-end setup
- Reduces hands-on time by two-thirds of typical open systems
- Barcoding eliminates manual data input
- Comprehensive LIS integration
- Continuous sample loading allows operator to begin loading and running microplates as they are ready, instead of all at once

Reagent Loading

- Eliminates nearly all manual liquid-transfer steps
- Free up significant labor time and allows for multitasking
- Illuminated, color-coded access positions allow simple loading of all kits, tips, microplates and other consumable items, preventing loading errors
- 2D barcodes printed on kits provide accurate and secure information
- Inventory tracking allows for maximum materials efficiency

Safety

- Pre-packed TestLine SmartKits® with printed barcodes
- Sample tube barcode scan
- Automatic tube type recognition
- Automatic strip check
- Color-coded access positions



Initialization

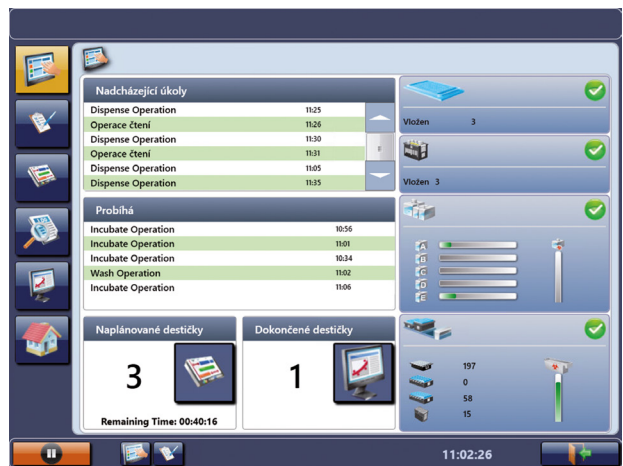
Before the analysis, the correct functionality of all device modules is checked through Initialization.



Dashboard

Summary of the ongoing analysis is provided in the dashboard where you can easily and quickly see all important information such as:

- number of inserted plates and the exact time remaining until the end of the analysis;
- number of completed plates;
- overview of individual ongoing and following operations;
- simple summary of inserted consumables.



Analysis Planning

Highly sophisticated software can schedule and display the duration of analysis so all the capacity of the device will be the most effectively used. Thanks to graphically simple display the user immediately has a clear idea of how the whole analysis will take place.



Technical Parameters

Dimensions (W x D x H)	1250 x 1230 x 900 mm
Footprint	1200 x 650 mm
Bench Weight	213 kg max.
Ship Weight	296 kg max.
Noise	Noise output <80 dB

System Specifications

Number of Plates	12 (+ continuous loading)
Number of Sample Tubes	200 (+ continuous loading)
Number of Reagents	max. 16 SmartKits® at a time (+ continuous loading)
Number of Pipettes	2 (sample + reagent)

Reader Specifications

Photometric Range	0,000 – 3,500 OD
Spectral Range	405 – 690 nm
Precision	< 1% CV (0,000 – 2,000 OD) < 1,5% CV (2,000 – 3,000 OD)
Accuracy	± 0,010 OD or 2,5% (0,000 – 3,000 OD)
Linearity	± 1% (0,000 – 2,500 OD) ≤ 1,5% (>2,500 OD)
Read Time	< 30 seconds, single wavelength < 50 seconds, dual wavelength

Washer Specifications

Manifold Configuration	8-way wash head
Programmable Volumes	50 – 999 µl
Wash Containers	4 wash bottles at 3.0 l, with quantitative level sensing
Clean Container	1 wash bottle at 3.0 l, with quantitative level sensing
Waste Container	10 l with quantitative level sensing
Residual Wash Volume	< 3 µl/well
Dispense Precision	≤ 5% CV (300 µl)

Incubator Specifications

Number of Incubators	up to 12 (6 Elevated)
Temperature Range	RT + 4 °C to 45 °C (Elevated Incubator) RT + 4 °C (Ambient Incubator)
Temperature Accuracy:	± 1 °C

Temperature Distribution in Plate	± 1 °C
Shaking	14 Hz periodic or continuous

Sample Pipetting Specifications

Sample Tip Size	300 µl
Sample Pipetting Volume	10 – 300 µl
Time to Dispense	< 15 min. (50 ul, 96 samples)
Sample Pipetting Precision	≤ 3% CV (10 µl)
Sample Pipetting Accuracy	± 2% of target volume
Dilution Range	1 part in 199 one-stage dilution, 1 part in 39,601 two-stage dilution

Number of Sample Tips	20 racks of 112 tips (+ continuous loading)
Sample Tube Dimensions	10-17 mm diameter external dimension, 45-100 mm depth

Reagent Pipetting Specifications

Reagent Tip Size	1200 µl
Reagent Pipetting Volume	20 – 1200 µl
Number of Reagent Tips	1 rack of 98 tips (+ continuous loading)
Reagent Pipetting Precision	≤ 3% CV (10 shots, single shot mode)
Reagent Pipetting Accuracy	± 2% of target volume (single shot mode)

Power Requirements

Voltage	100 – 240 V automatic switching
Frequency	50/60 Hz
Power Consumption	< 1000 VA (online UPS required)

Regulatory Compliance

Certified	ISO13485
Electromagnetic Perturbation	EMC Directive 2004/108/EC: EN 61326-2-6:2006, IEC 61326-1:2006
Electrical Safety	BS EN 61010-1:2001, IEC 61010-1:2001, IEC 61010-2-101
Lead-free	all components are RoHS compliant
IVDR	CE marked per IVDR 2017/746 Directive

TestLine SmartKits®

Direct-load solution to front-end preparation that reduces technician time and potential for costly data entry errors, while improving ease-of-use, safety, hands on time and performance.

The TestLine SmartKits® include four main components: the consumable bottles of any given reagent kit, a 2D barcode with lot-specific assay information, an insert for holding reagent bottles and a cap holder for reagent bottle caps. Once caps are removed and stored in the cap holder, the SmartKit® is placed directly into the Agility® for testing.

User Comfort

- Disposable, single-use inserts require no assembly
- Reagents arrive packaged in the insert with 2D barcodes already affixed
- User only takes the insert from the package, removes and places the reagent bottle cap in the cap holder, and loads the kit into the Agility®



Parameters Offer

Infectious diseases

SmartEIA Adenovirus

SmartEIA Borrelia

SmartEIA Borrelia recombinant

SmartEIA Borrelia afzelii

SmartEIA Borrelia b. sensu stricto

SmartEIA Borrelia garinii

SmartEIA Bordetella parapertussis

SmartEIA Bordetella pertussis Toxin

SmartEIA CMV

SmartEIA COVID-19 NP

SmartEIA COVID-19 RBD

SmartEIA EBV EA-D

SmartEIA EBV EBNA-1

SmartEIA EBV VCA

SmartEIA HSV 1+2

SmartEIA HSV 1

SmartEIA HSV 2

SmartEIA Helicobacter MONO

SmartEIA Chlamydia

SmartEIA Chlamydia pneumoniae

SmartEIA Chlamydia pneumoniae REC

SmartEIA Chlamydia trachomatis

SmartEIA Influenza A

SmartEIA Influenza B

SmartEIA Measles

SmartEIA Mumps

SmartEIA Mycoplasma

SmartEIA Mycoplasma REC

SmartEIA Parainfluenza mix

SmartEIA Parvovirus B19

SmartEIA PCP

SmartEIA RSV

SmartEIA Rubella

SmartEIA TBE Virus

SmartEIA Tetanus Toxoid

SmartEIA Toxocara

SmartEIA Toxoplasma

SmartEIA Treponema pallidum

SmartEIA VZV

SmartEIA Yersinia

Immunology

SmartEIA dsDNA

SmartEIA ENA screen plus

SmartEIA ENA profile plus

SmartEIA SS-A

SmartEIA SS-B

SmartEIA Sm

SmartEIA U1RNP

SmartEIA Scl-70

SmartEIA Jo-1

SmartEIA CCP

SmartEIA RF

SmartEIA ASCA

SmartEIA Gliadin

SmartEIA Gliadin DA

SmartEIA Milk

SmartEIA Transglutaminase

Notes: Smartkit® kits are available in all isotypes of antibodies as with the standard TestLine EIA kits. Each kit contains 96 tests except ENA profile kits which contain 12 tests.

MANUFACTURER:



DYNEX® Technologies

14340 Sullyfield Circle
Chantilly, VA 20151-1621 USA
customerservice@dynex.com

DISTRIBUTOR:



TestLine Clinical Diagnostics Ltd.

Krizikova 68, 612 00 Brno
Czech Republic
www.testlinecd.com

Sales Department:

+420 549 121 203
sales@testlinecd.com

Orders:

+420 541 243 390
order@testlinecd.com